



Please observe the technical data!!! (see manual and data sheets)

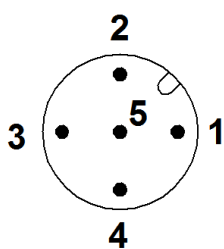
## Mounting On Linear Actuators and Part-Turn Actuators

- Put position indication with feedback pin and spring on mounting kit.
- Turning the angle of rotation indicator on 0° (at no on 90°) at part-turn valve actuator.
- Tighten the three threaded pins in the fastening ring.
- Connect output "Y1" with valve actuator.
- provide the electrical connections.
- Open the dome
- Carry through positioner adjustment (see Self Adjusting).
- Close the dome

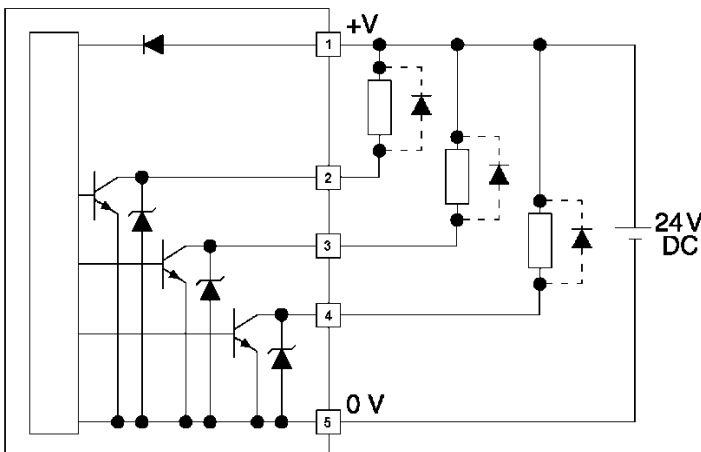
Dismount the position indication correspondingly in reverse order.

## Electrical Connections

Pin assignement of plug connection M12x1,5

Top view of plug	Pin on plug	Function
	Pin 1	Supply voltage +24V
	Pin 2	NPN_DOWN
	Pin 3	NPN_UP
	Pin 4	NPN_ERROR
	Pin 5	Supply voltage -

### NPN-switching outputs



In the event of inductive loads occurring, install a free-wheeling diode close to the inductive load (e.g. 1N4007).

For digital processing of the switching outputs use an operating resistor.

The maximum current capacity of the switching outputs is 100 mA, so relays can also be operated directly for example.

## Self Adjusting Mode



The assembled position indicator is factory-calibrated. It normally only needs to be re-adjusted after a replacement or possibly following a repair of the valve.

When a new or replaced position indicator has been mounted on the valve, it must be adjusted as follows. Power must be connected to the digital position indicator when doing so.

- Unscrew the dome and press and hold down the button (A) for about three seconds until the LEDs light up white.
- Then the valve must be moved to both its end positions manually at least once.
- When the valve has been moved to both its end positions, press the button once more to finish the procedure. Alternatively, the calibration process is automatically terminated after 10 minutes and the end positions are saved.

## **Error messages/Troubleshooting**

<b>Error / Symptom</b>	<b>Possible cause(s)</b>	<b>Procedure</b>
LED lit steadily red	Insufficient control air pressure, valve not reaching end position	Check compressed air supply
	Valve out of calibrated range	Recalibrate
	Seating seal severely worn	Replace seal, calibrate
LED not lit	Supply voltage < 20V	Check supply voltage
	Valve not at either end position	Wait 30 seconds until position indicator detects valve sticking error
LED flashes white	Position indicator has no valid calibration	Calibrate.

The error messages that are signalled via the NPN-switching output can be configured with the "**ConfigSys**" software. Furthermore the color signals, maintenance intervals, maintenance alert settings and the behaviour of the switching outputs can be adjusted by software.